

The suction units PM series with powers ranging from 3 to 30 kW can be used in pneumatic conveying systems for throughputs up to 4500 kg/h and distances up to 200m. Application in centralized feeding system Matrix.



TECHNICAL SPECIFICATIONS:

- Side-channel pumps from 1 to 3 stages.
- Cam pumps.
- Lobes pumps.
- Self-cleaning filters with polyester cartridges and dust-collection bin.
- RS485 ModBus interface.

ACCESSORIES:

- Pressure switch for clogged filter;
- SPEED CONTROL function.

ADDED VALUE:

- **VERSATILE**
Suction units can be integrated on a MATRIX centralized system or PLC Siemens control.
- **EFFICIENT**
The SPEED CONTROL function with inverter and pressure transducer automatically adjusts the conveyance speed. This prevents the deterioration of the polymer and results in energy efficiency.



SIDE CHANNEL PUMP

Power 3kW
Distance 0-60m



TWO SIDE-CHANNEL PUMP

Power 5 - 20kW
Distance 10 - 100m



THREE SIDE-CHANNEL PUMP

Power 15kW
Distance 10 - 150m



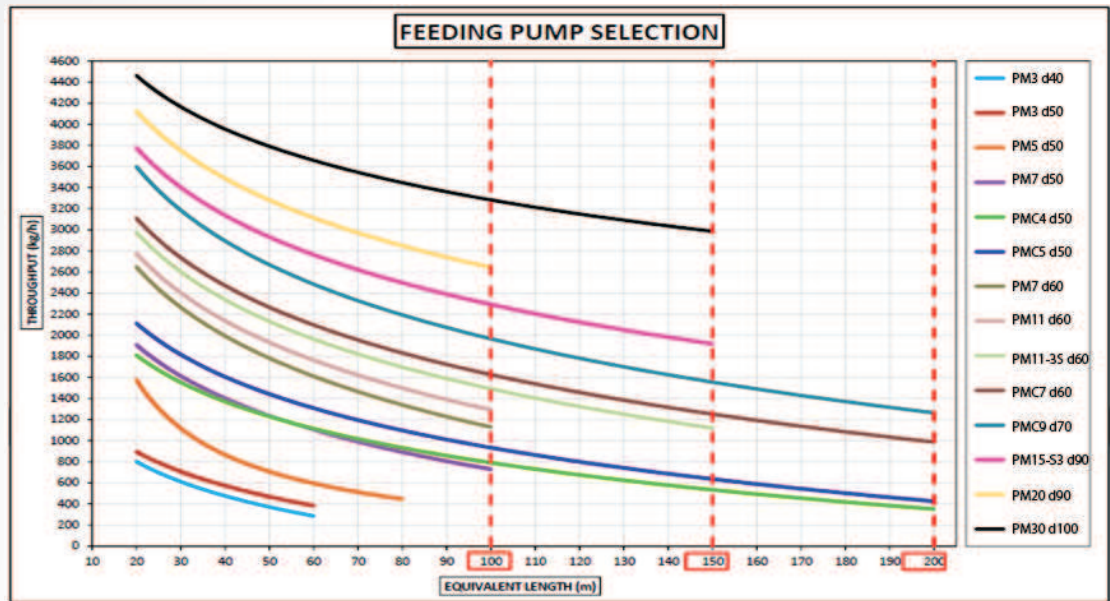
SOUND-PROOF THREE LOBES PUMP

Power 30kW
Distance 10 - 150m



CAM PUMP

Power 4 - 9kW
Distance 10 - 200m



Cylindrical granule.
Bulk density from 500 up to 850 kg/m³.

TECHNICAL DATA		PM3	PMC4	PM5	PMC5	PM7	PMC7	PMC9	PM11	PM15	PM20	PM30
Maximum suction capacity*	kg/h	400	1000	600	1000	1200	1800	2200	1500	2500	2800	3400
Power	kW	3	4	5.5	5.5	7.5	7.5	9	11	15	20	30
Maximum depression	kPa	26	70	43	70	40	70	70	43	60	50	50
Noise level	dB(A)	70	<80									
Ø Vacuum-material line	mm	40/50	40/50	40/50	40/50	60/70	60/70	60/70	60/70	70/89	89/100	100/127
Filtering surface	m ²	6.7	6.7	11	11	11	11	11	11/13	13	22	22
Type of filter cleaning		autopulente										
C.a. pressure	bar	6-8	6-8	6-8	6-8	6-8	6-8	6-8	6-8	6-8	6-8	6-8
C.a. consumption	l/s	0.5	0.5	0.5	0.5	0.5	0.5	0.5	0.5/1.5	1.5	1.5	1.5
Voltage/Frequency	V/Hz	400/50-60										
Weight	Kg	100	220	140	250	250	280	300	270	300	500	550

* The values on the table refer to an average horizontal distance of about 80m.

The times for pipe cleaning and the rotation time of the automatic manifold have not been considered.

TECHNICAL DATA		PM3	PM5	PM7	PM11	PM15	PM20	PM30
Dimensions WxDxH	FC2	700x862x1975	-	-	-	-	-	-
	FC3	-	700x862x1975	700x862x1975	700x862x1975	-	-	-
	FC8	-	-	-	1061x1825x2643	1061x1825x2643	1893x1200x2748	-
	FC22	-	-	-	-	-	-	-

TECHNICAL DATA		PMC4	PMC5	PMC7	PMC9
Dimensions WxDxH	FC3	1400x670x1970	1400x670x1970	1400x670x1970	1400x670x1970

The suction units of the PD series with powers from 1,1 to 15 kW are used in pneumatic conveying systems for throughput up to 3000 kg/h and distances up to 150m.



TECHNICAL SPECIFICATIONS:

- Side-channel blowers from 1 to 3 stages.
- Self-cleaning filters with polyester cartridges and dust-collection bin.
- RS485 ModBus interface.

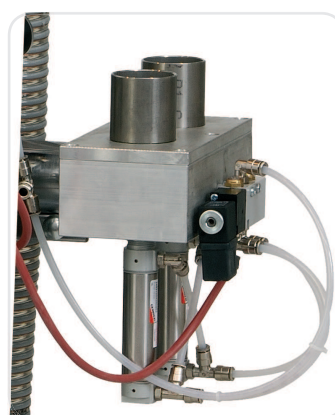
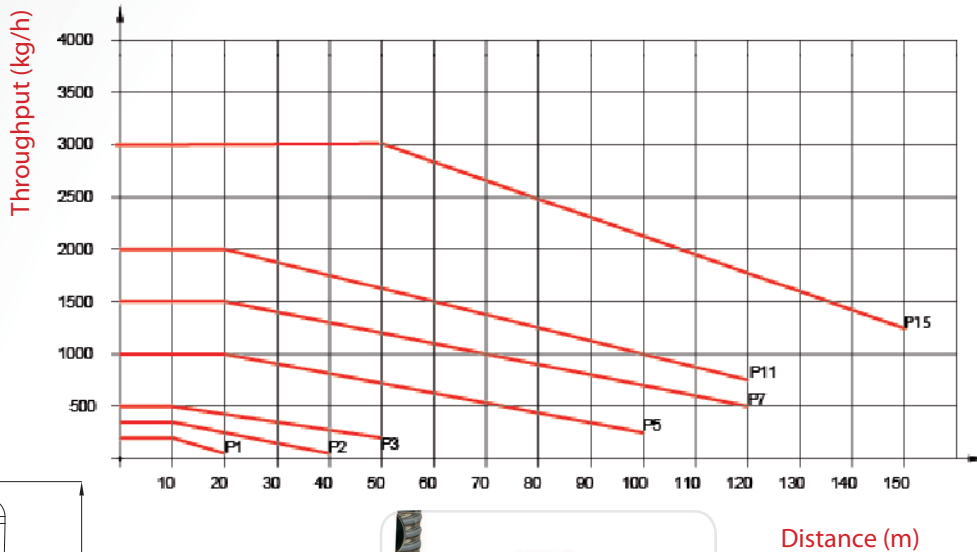
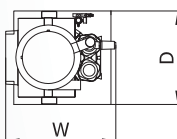
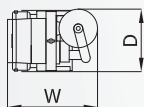
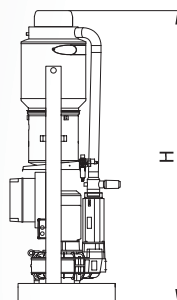
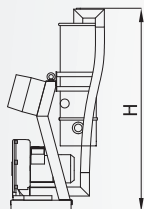
ACCESSORIES:

- Pressure switch for clogged filter;

ADDED VALUE:

- **VERSATILE**
The suction units are available for two loading receivers.

Three-phase hopper loaders



Duo System valve

TECHNICAL DATA		PD1	PD2	PD3	PD5	PD7	PD11	PD15
Suction capacity	kg/h	200	300	500	1000	1500	2000	3000
Power 400V/50Hz	kW	1.1	1.5	3	5.5	7.5	11	15
Power 460V/60Hz	kW	1.3	1.7	3.4	6.3	9	12.6	17.3
Suction pressure	kPa	16	20	26	43	43	43	60
Noise level	dB(A)	61	61	70	75	75	75	75
Ø Vacuum-material line	mm	40	40	50	50/60	60/70	60/70	70/89
Filtering surface	m ²	1.8	2.9	2.9/6.7	11	11	11/13	13
Type of filter cleaning		Self-cleaning						
C.a. pressure	bar	6-8	6-8	6-8	6-8	6-8	6-8	6-8
C.a. consumption	l/s	0.5	0.5	0.5	0.5	0.5	0.5/1.5	0.5/1.5
Dimensions WxDxH	Filter FC1	380x414x682	380x414x682	380x488x682	-	-	-	-
	Filter FC2	-	-	700x862x1975	-	-	-	-
	Filter FC3	-	-	-	700x862x1975	700x862x1975	700x862x1975	-
	Filter FC8	-	-	-	-	-	1061x1825x2643	1061x1825x2643
Weight	Kg	30	40	60/140	190	210	230	300