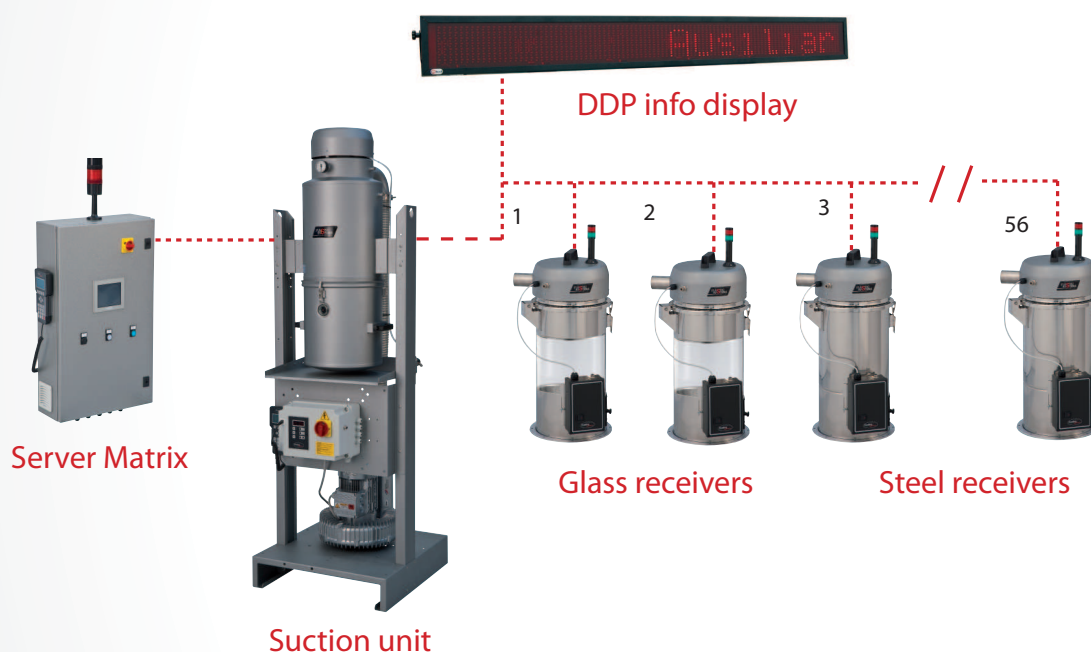


The matrix microprocessor control allows you to create a centralized system for the pneumatic conveyance of granules. The system is flexible and can be expanded. With just one control unit it is possible to manage up to 8 vacuum pumps and 56 receivers.

The operation is automatic and it is possible to completely control the storage and sorting of materials as well as the association material - processing machine.

The entire system is easy to use: no more waste of polymers. The "MMS" system allows the automatic selection of the conveyance speed depending on the material and distance.



TECHNICAL SPECIFICATIONS

- Control with microprocessor for 8 pumps and 56 receivers.
- Portable keyboard with digital display.
- Integrated management of:
 - Self-cleaning filters;
 - Proportion valves;
 - Valves for pipe-cleaning;
 - Manual and automatic manifolds;
- Also available: version EASY MATRIX with a panel installed in the suction unit for a maximum of 10 receivers.
- All the components of the system are connected through a serial line.
- RS485 ModBus interface.

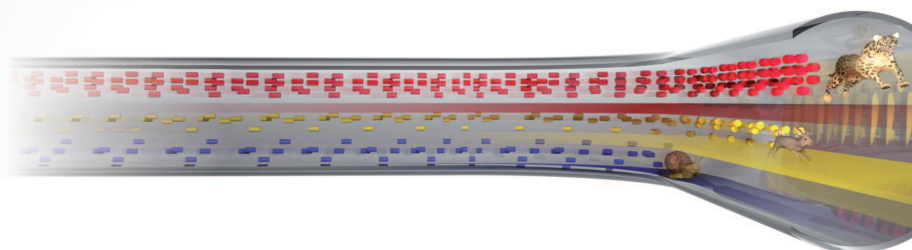
ACCESSORIES

- Colour touchscreen.
- ABC automatic exchange of standby blower.
- DDP info display.
- Management of material speed "MMS".

ADDED VALUE:

- Safe conveyance thanks to the MMS system that prevents the degradation of the polymer and production of dust.
- Total flexibility: it is possible to create new configurations of storage, production shops and extensions by quickly configuring the logic of the system.
- Easy operator interface.
- Low energy consumption thanks to a fully integration with vacuum pumps with variable frequency driver.
- Auto tuning feeding time by level sensor.

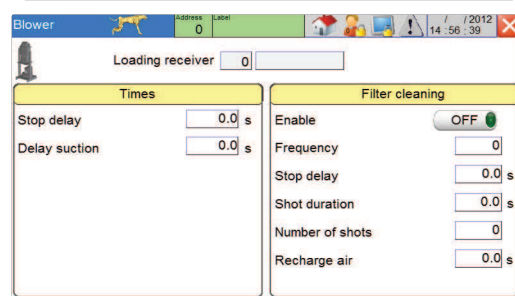
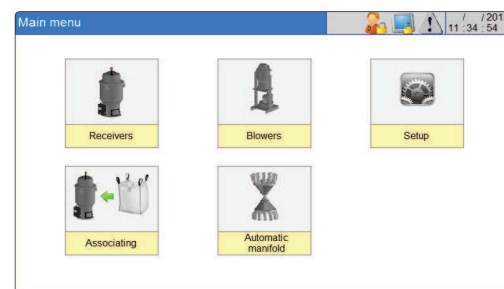
Management of material speed "MMS"



MATRIX system with handcontrol and touchscreen



EASY MATRIX system



Touchscreen control



Matrix system installation

The automatic manifolds AMM series are the ideal solution for the distribution of plastic materials from storage area. There are four models with pipes to machines of 40 - 50 - 60 - 70 mm diameter.



TECHNICAL SPECIFICATIONS:

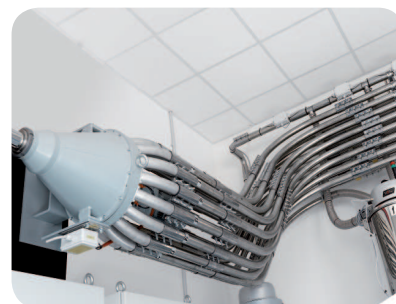
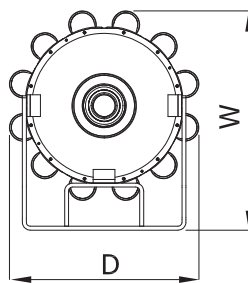
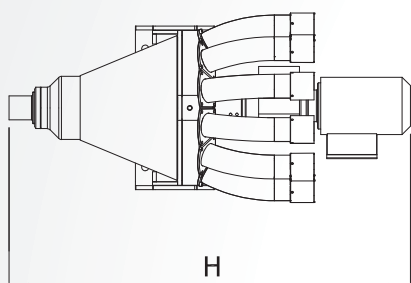
- Control with PLC Siemens and a touch screen interface. The control unit manages up to 4 modules.
- Gearmotor with a built-in brake system.
- Components made of wear-resistant stainless steel.



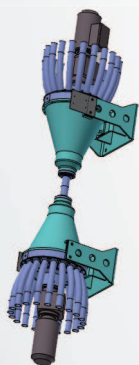
ADDED VALUE:

- **RELIABLE**
The precision of the mechanical parts, the control with PLC and its sensors guarantee an absolute reliability.
- **NO "GROUND" FOOTPRINT AND EXPANSIONS**
Its special design, modularity, and the possibility to expand its functions result in an innovative product in this field.
- **SAFETY**
The moving parts are inside the manifold: no risks for operators.

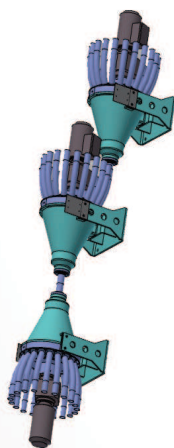
Automatic manifolds



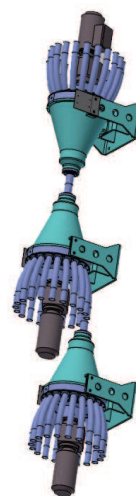
Possible configurations



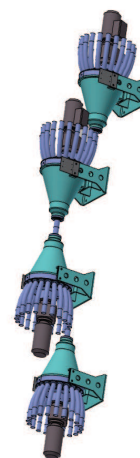
2 Manifold



3 Manifold



3 Manifold



4 Manifold

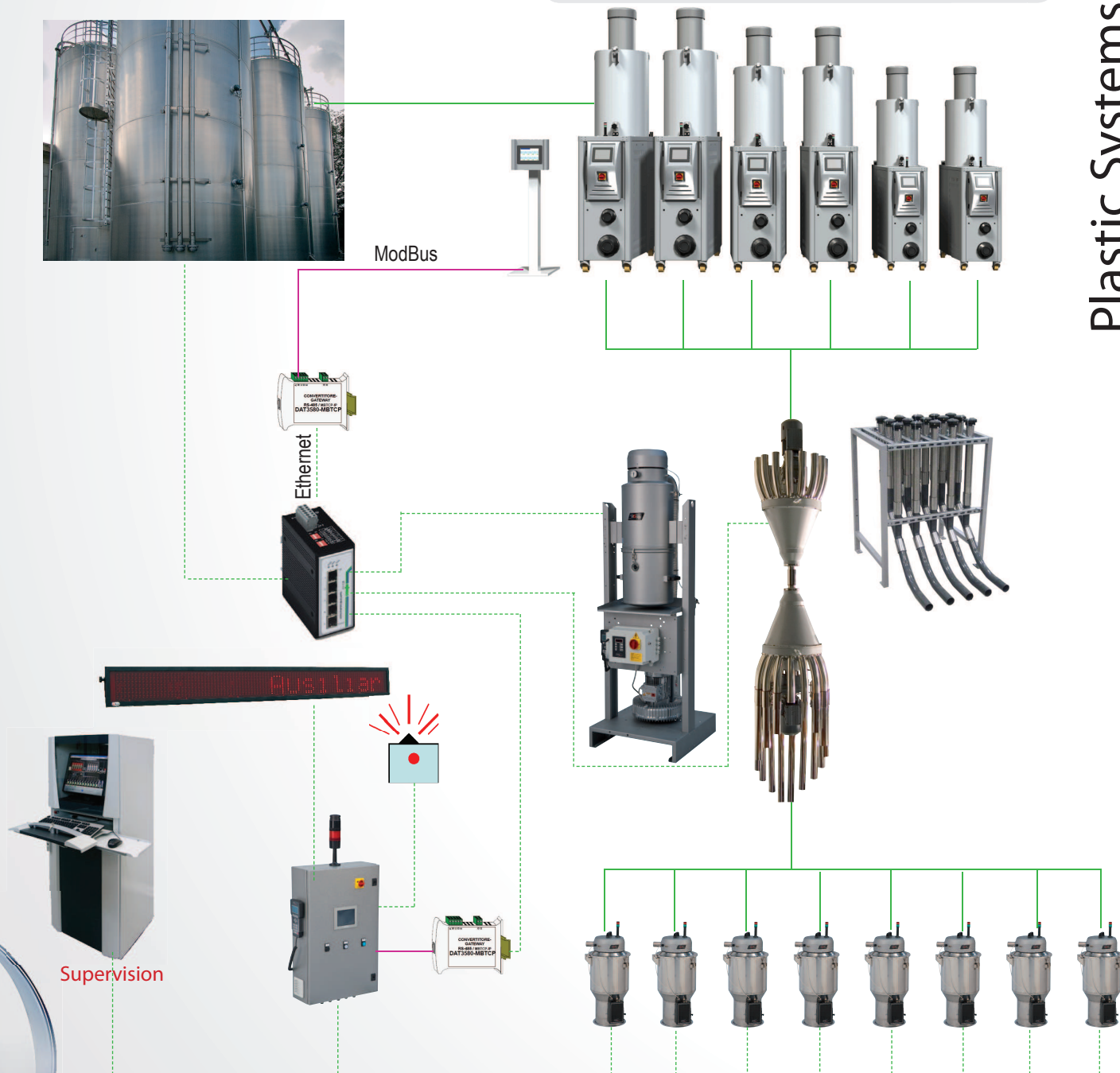
TECHNICAL DATA		D.40	D. 50	D. 60	D. 70
Connections	N°	20	16	12	12
Voltage/Frequency	V/Hz	400/50-60	400/50-60	400/50-60	400/50-60
Total power	KW	0.15	0.15	0.15	0.15
Dimensions WxDxH	mm	544x459x1016	548x466x1016	550x469x1016	555x480x1016
Weight	kg	160	160	160	160

PLASTIC SYSTEMS supervision software allows controlling all the machines of a plant:

- Storage silos.
- Centralized / singol dehumidification .
- Manual / automatic manifolds.
- Automatic Centralized feeding system to processing machines.
- Dosing station.

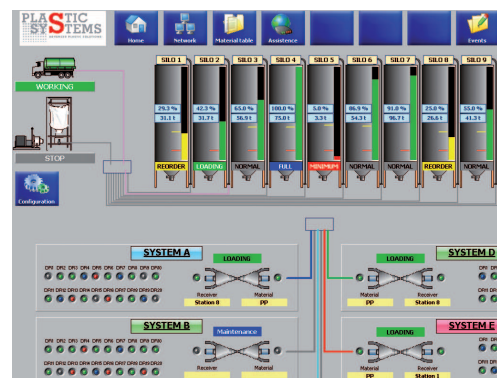
ADDED VALUE:

- Full control of the process: from silos to processing machines.
- Traceability of supplied materials.
- Optimization of the operating parameters according to production with energy saving.
- Flexible and easy-to-use operator interface.
- Communicate and interface with barcode mobile devices, tablets, laptops.





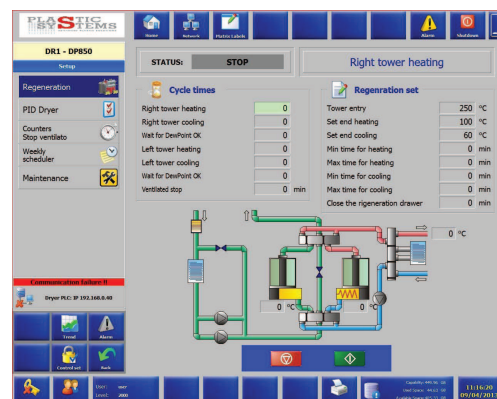
Main screen



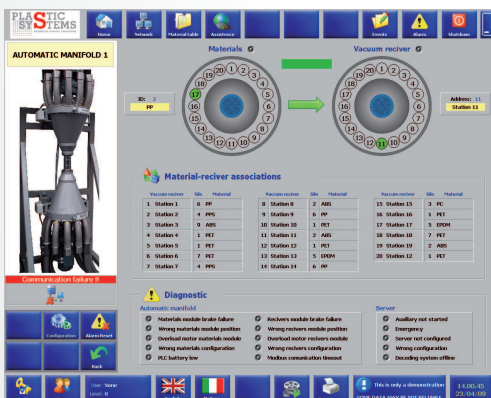
Silo loading



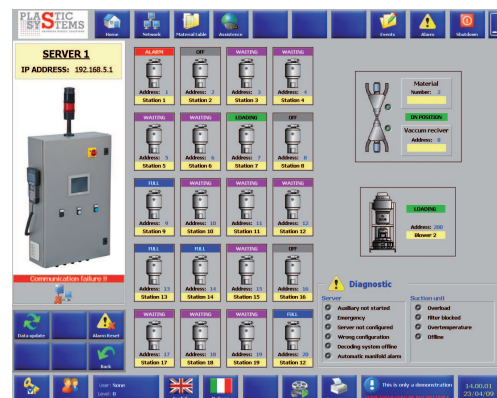
Silo



Dryer



Automatic manifold



Server



Suction unit



Receiver