

The volumetric dosing units DM series have been designed for the automatic and precise dosing of masterbatches, additives, regrind.

The synergy between design, applied technology and material quality results in high flexibility. They can be installed on injection moulding machines, blow-moulding machines and extruders.



TECHNICAL SPECIFICATIONS:

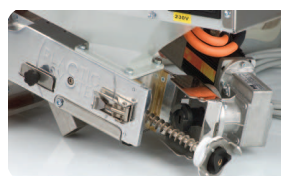
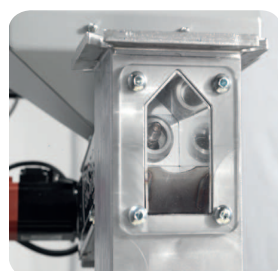
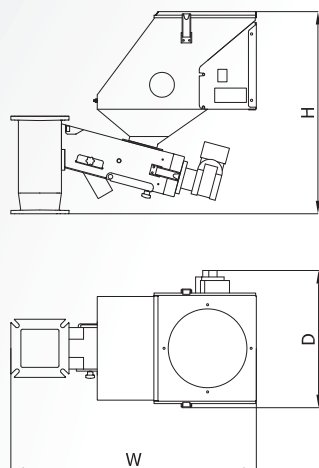
- Inclined-axis dosing unit.
- Brushless motor drive.
- Control console and LCD display installed directly on the dosing unit (removable as optional).
- Self-learning calibration just by opening a slide gate.
- Lower slide gate for the unloading of material.
- Central flanged base to install up to 2 dosing units.
- Complete with static mixer.
- RS 485 Modbus interface.

ACCESSORIES:

- Painted steel central hopper.
- Alarm for lack of material with capacitive level sensor and buzzer.
- Kit for remoting the controller.
- Mixer body with blades.

ADDED VALUE:

- 50 storable recipes.
- Quick color change and cleaning thanks to a fully accessibility to the unit.
- Wide range of stainless-steel dosing screws and cylinders that can be easily and quickly interchanged.



TECHNICAL DATA	Screws D x P		DM10	DM10R	DM20	DM20R
Minimum-maximum throughput	8x8	kg/h	0.06-0.84	0.01-0.5	-	-
	12x8	kg/h	0.07-1.35 0.24-2.8	0.09-1.4	-	-
	16x10	kg/h	0.5-0.6	0.07-2	-	-
	20x12	kg/h	1-11.7	0.2-3.5	-	-
	20x20	kg/h	1.4-17.5	0.6-8.3	-	-
	25x20	kg/h	-	-	2.2-26.5	0.7-11
	30x20	kg/h	-	-	3-39	1.3-18.5
Gearbox ratio			1:38	1:38	1:38	1:38
Maximum N° of materials			2	2	2	2
Hopper volume		dm ³	15	15	15	15
Central hopper (optional)		dm ³	25	25	25	25
Motor power (dosing unit)		kW	0.12	0.12	0.12	0.12
Motor speed		r.p.m.	3000	3000	3000	3000
Motor power (mixer)		kW	0.2	0.2	0.2	0.2
Cooling water flow		l/min	-	5	-	5
Mixing chamber capacity (opt)		dm ³	1	5	1	5
Voltage/Frequency		V/Hz	230/50-60	230/50-60	230/50-60	230/50-60
Noise level		dB(A)	<80	<80	<80	<80
Dimensions WxDxH		mm	331x574x492	331x587x489	330x591x486	332x610x499
Weight		kg	19	20	21	21

R: Water-cooled version